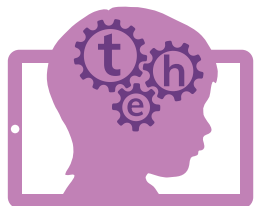


LanguageScreen has been used to select children most likely to benefit from the **Nuffield Early Language Intervention (NELI)** programme, in the national rollout funded by the Department for Education (DfE).

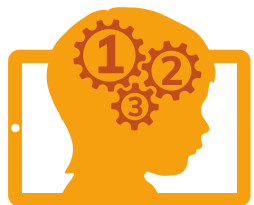


## New for 2022:

Track reading and number skills across Primary with our new apps.



**Reading  
Screen**



**Maths  
Screen**

Beta  
versions:  
Try for free  
until August  
2022



To join the Beta trial, contact [info@oxedandassessment.com](mailto:info@oxedandassessment.com)



OxEd is proud to be affiliated with the **University of Oxford** and **Oxford University Innovation**, which develops and finances companies in order to share the benefits of Oxford's academic excellence, encourage local economic development and create new jobs in the region.



Sign up for a free trial of our apps at [oxedandassessment.com](https://oxedandassessment.com)



# OxEd & Assessment

Over 300,000  
pupils assessed

Language, reading and maths assessments made easy



*"What an amazing app! So quick and easy to administer, and accessing the data afterwards was painless."*

Claudine Bowyer-Crane, National Institute of Economic and Social Research

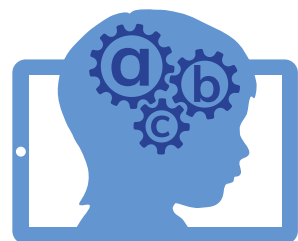


**Language  
Screen**

**SIGN UP FOR  
A FREE TRIAL**

[oxedandassessment.com](https://oxedandassessment.com)

LanguageScreen identifies speech and language difficulties that teachers find hard to spot



# LanguageScreen

Ailsa Dinsdale, Reception teacher,  
Harewood Primary School, Stockton-on-Tees.

LanguageScreen homes in on the aspects of language a child is struggling with.

- 10 minutes per test
- No paper marking or calculations
- Suitable for ages 3½ to 9 years
- Colourful and fun for pupils
- No training required
- Instant results, detailed report
- Can be used with evidence-based interventions
- Assess progress throughout Key Stage 1
- Compatible with iOS and Android tablets and phones

Thousands of teachers and teaching assistants use LanguageScreen to identify children who would benefit from additional language support.

## Choose from one of our Subscription packages

Smaller school (1 form entry)  
**£275 per year**

Larger school (2+ form entry)  
**£395 per year**

An annual licence allows for unlimited assessments. Discounts are available for multi-year subscriptions and bulk purchases.



**OxEd and Assessment Ltd (OxEd)** is a University of Oxford spinout company created to take the research of Professor Charles Hulme and his team through to practical application in schools.

Our educational assessment apps and interventions have been shown to improve educational outcomes for children.



For a free no-obligation trial, sign up at [oxedandassessment.com](https://oxedandassessment.com)